

**Calgary Office**

Brock White Completes Acquisition of Manstar Distributors Ltd.

Brock White is pleased to announce the acquisition of the Manstar Distributors Ltd. operations in Edmonton and Calgary, Alberta effective June 30, 2006. Manstar Distributors is a leading supplier of brick, stone and stucco products in the Alberta, Canada construction market.

Continued on page 2.

**Edmonton Office**

From the President...

The overall US economy remains sound but is experiencing a transition from the above average growth rates of the last several years to trends slightly below the long term averages due to energy price increases and tightening monetary policy. These trends will push US unemployment, inflation, and interest rates up which impacts us by slowing residential construction activity. Investment in equipment, on the other hand, is expected to grow at double-digit rates, which will result in improved commercial construction. The Canadian economy is a beneficiary of the higher energy prices with its huge oil reserves in Alberta and will continue to grow on both the consumption and investment side resulting in steady and balanced economic growth, which in turn supports both residential and commercial construction. Our first half results reflect these trends with very strong Canada sales growth being offset by slower growth in our US offices, especially those serving our residential contractor customers.

Continued on page 2.

Brock White Completes Acquisition of AGES Inc. (Applied Geo-Environmental Solutions Inc.)



Brock White is pleased to announce the acquisition of the AGES Inc. (Applied Geo-Environmental Solutions Inc.) effective August 31, 2006.

Continued on page 2.



Continued from page 1.

AGES is a leading supplier of geosynthetics products in the Alberta, Canada construction market. AGES' management team, sales staff, and support personnel will continue with the expanded AGES/Brock White business operation.



AGES Inc. serves the construction industry, resource and property development clients in Alberta and B.C. and has dedicated itself to providing excellent customer service, products and technical assistance.

The integration of AGES' full line of



geosynthetics products and Brock White's construction specialty and insulation products will provide Alberta contractors a very wide range of product selection and expertise. Brock White is excited to announce AGES' tradition of excellence in customer service and product supply and we look forward to being your "FIRST CHOICE" of supply.

Continued from page 1.



The purchase expands Brock White Canada's construction products distribution

business into the fast growing Alberta market.

Manstar's management team, sales staff, and support personnel will continue with the expanded Manstar/Brock White business operation.



Manstar Distributors Ltd. has served masonry, stucco and building contractors in Alberta since 1986 and has dedicated itself to providing excellent customer service and the highest quality and innovative products.

The integration of Manstar's full line of

brick, stone, and stucco products and Brock White's construction specialty and insulation products will provide Alberta contractors a very wide range of product selection and expertise. Brock White is excited to continue Manstar's tradition of excellence in customer service and product supply and we look forward to being our customer's "FIRST CHOICE" of supply.

Continued from page 1.

We continue to invest in our business, however, and are pleased to announce the June 30, 2006 acquisition of Manstar Distributors Ltd., and the September 1, 2006 acquisition of AGES Inc. Manstar distributes both masonry and stucco products through offices in Edmonton and Calgary, Alberta, Canada. Their major lines include "Synergy" acrylic stucco and "Cultured Stone". AGES distributes innovative geosynthetic and erosion control products through their office in Calgary, Alberta, Canada. We plan to expand Manstar's and AGES product offerings into other Brock White products as soon as possible and we look forward to serving the growing Alberta construction markets with our **FIRST CHOICE** brand of products and service for many years to come.

Other 2006 programs to serve you better are on track and include recent moves to larger facilities in both Fargo and Sioux Falls and yard expansions in Duluth and Thunder Bay. We have completed our web based Canada product catalog and should have an updated Canada catalog in print form by the end of this year. Our goal is to improve our business everyday through first class products, service, information systems, employee training, facilities, trucks, and material handling equipment and we are making progress in that direction every day.

We are in our 52nd year of service to the construction industry with our goal to be your **FIRST CHOICE** of supply. Thanks for your past business and we look forward to serving you each and every day. As always, tell us how we're doing—we need your feedback to do the best possible job. Call or write or e-mail me at rgarland@brockwhite.com.

Sincerely,

Richard D. Garland, President

FEATURED PROJECT

Husky Ethanol Project Lloydminster, Saskatchewan

Products Used: Roxul SturdiRock High Density Pipe Insulation, Roxul Plus MB Metal Building Insulation, Roxul Tecton 1200 Pipe Insulation, 3M Fire Barrier 2001 Silicone RTV Foam

Project Mechanical Engineer: KGS Group, Winnipeg, MB

Project Contractor: Graham Industrial, Saskatoon, SK

Project Manager: Owen Walbaum (Fuller Austin)

Project Superintendent: Les Taylor (Fuller Austin)

Brock White Sales Rep.: Derek Anderson, Brock White-Saskatoon

Date of Project: 2005/2006

Brock White Canada is proud to have been selected as the chosen supplier of Fuller Austin Insulation for the building, equipment and vessel insulation for the Husky Ethanol Project.

Roxul SturdiRock pipe insulation was specified for use on piping from the ground to the seven feet level to protect against mechanical abuse. Les Taylor, site Superintendent for Fuller Austin, said SturdiRock was easier to work with than calcium silicate pipe insulation, and the density was there.”

Roxul Tecton 1200 pipe insulation was used for the balance of the piping to provide personnel protection and thermal efficiency.

Roxul MB Plus mineral wood blanket insulation was selected throughout the plants buildings for it's lightweight and fire resistant properties.

3M Fire Barrier 2001 Silicone RTV Foam was used throughout the milling and mashing stairwells in the distillation building to provide containment for fire safety.



Left to right: Derek Anderson-Brock White, Mike Kozokowski-Roxul Rep., Les Taylor-Fuller Austin Superintendent, Owen Walbaum-Fuller Austin Project Manager.



This new \$150,000,000 ethanol facility is expected to produce 140 million litres each year. This will assist with the Canadian federal governments mandate of having all gas sold in the country using a 5% ethanol blend by 2010.

FEATURED PRODUCT

ROXUL-STURDIROCK

The new Standard in Ultra High Density Pipe Insulation

The Advantages of Mineral Wool

Like all Roxul products, SturdiRock™ is mineral wool insulation made from basalt and slag. This combination results in a non-combustible insulation with a melting point of 2150°F (1177°C). It possesses excellent fire resistant properties and is a water repellent yet vapour permeable material.



Fast, Efficient Installation

Because SturdiRock™ is so easy to handle and cut, installation can take less time which can help reduce labour costs. When used in outdoor applications, a weatherproofing system is required.

Engineered for Outstanding Performance

This mandrel-wound preformed pipe pipe insulation delivers exceptional compressive strength combined with excellent thermal performance. It's ideally suited for steam and process pipe systems where energy conservation, personnel protection and fire control are priorities.

SturdiRock™ cuts easily with a serrated knife and is very clean to work with.

Sizes and Specifications

SturdiRock™ is available in wall thicknesses ranging from 1” to 5” in increments of .5”, and nominal pipe sizes ranging from .5” to 34”. It fully complies with all ASTM and CAN/ULC performance standards.

Roxul Inc. is the North American subsidiary of the Rockwool International A/S group of companies. As the largest manufacturer of mineral wool products in the world, Rockwell International A/S is committed to the advancement of mineral wool insulation through ongoing investment in research and development of leading-edge technologies.



FEATURED PRODUCT

DOW GREAT STUFF™ PRO

GREAT STUFF™ Pro adds value to new construction or remodeling projects. Improve homeowner comfort while saving energy dollars.



Designed exclusively for construction trade professionals, GREAT STUFF Pro insulating foam sealants offer the same dependability as the original Great Stuff product line, but feature reusable application tools, larger canisters and a wider range of temperatures at which the product can be applied.

GREAT STUFF™ Pro Gaps & Cracks

Product Usage

A multi-purpose formula, GREAT STUFF™ Pro Gaps & Cracks is perfect for filling gaps and cracks ranging from pipe penetrations and electrical outlets to telephone and television cable entries. All GREAT STUFF Pro products are polyurethane-based and offer superior performance advantages over latex products.



- Available in 24 oz. gun and straw versions.
- Fills, seals and insulates gaps up to three inches.
- Forms a durable airtight and water-resistant bond.
- Bonds to wood, drywall, metal, masonry, glass and most plastics.
- Tack free in six minutes. Trims in 30 minutes.
- Wide temperature operating range (25°F to 120°F). Most foams only work in 60°F to 90°F. Freeze/thaw stable.
- Foam elasticity allows for movement/shifting within a structure from winter to summer.
- Paintable, stainable and sandable.
- Can be used to replace acoustical sealants on interior walls. Acoustical Rating: Sound Transmission Class rating of 69.
- Mechanical spring valve of GREAT STUFF Pro foam is superior to rubber valve. Won't glue shut after use. Use 1/4 of the can today, 1/4 in 30 days, and that can will be good for...another 30 days!
- Choose from three foam applicator gun models. Extended length gun barrel available for easier application, such as sub-floor construction.
- Orange colored foam allows easy identification by building code inspectors.
- GREAT STUFF Pro has been evaluated as residential fireblock sealing material (see ICC-ES legacy report NER-645).
- GREAT STUFF Pro has been evaluated by ASTM E 814 in wood frame pipe penetrations. Conforms to the ASTM C557-93, D6464, CA25-4, and is UL Class 1 (Flame spread of 15, smoke 20).

GREAT STUFF™ Pro Window & Door

GREAT STUFF™ Pro is setting the standard on how windows and doors should be installed. GREAT STUFF Pro Window & Door foam sealant is exclusively formulated to air-seal the gap between a window or door frame and its rough opening. It expands only enough to generate an effective seal, and makes window and door systems more energy efficient. All GREAT STUFF products are polyurethane-based and offer superior performance advantages over latex products.



- Available in 20 oz. gun and straw versions.
- Proprietary low-pressure formula guaranteed not to bow or bend window and door frames. This means reduced customer complaints or callbacks.
- Forms a durable, airtight and waterproof bond.
- Quick cure time. Tack free in eight minutes, trims within one hour.
- Paintable, sandable and stainable.
- Repels/deflects water.
- Gun foam re-startable up to 30 days.
- Conforms to ASTM S& AAMA standards.
- Affordable price point. One 20 oz. can of Window & Door foam up to six average residential windows (36'x60", 3/8" wide gap and 1" deep).
- Yields same as 13 quart tubes of caulk.
- Provides real insulation value which compliments the energy efficiency of the window or door. Greater R-value than chinked fiberglass or caulk.
- Flexible foam seal permits expansion and contraction.
- Soft, pliable foam is forgiving and easier to remove if gap is overfilled. Cured foam is stuffed back into the gap without trimming.

R&D Testing

GREAT STUFF Pro has gone through rigorous R&D testing and the foam is guaranteed not to crack or bend window and door frames. Window and door manufacturers such as Pella Corporation tested and endorsed Great Stuff Pro Window & Door.

Standards

GREAT STUFF Pro Window & Door meets or exceeds all industry standards for the installed exterior windows, doors and skylights...

- Industry standard practice for installation of windows states "An installed foam fill shall not distort the frame more than one-sixteenth (0.0625) inch along any side."
- Will not bow windows or doors—it expands only enough to generate an effective seal.
- American Architectural Manufacturers Association (AAMA) guidelines state sashes "Shall operate in either direction with a force not exceeding 30 lbs. for residential windows."
- American Society for Testing and Materials ASTM E-06/ASTM E 2112—Standard Practice for Installation of Exterior Windows, Doors and Skylights.

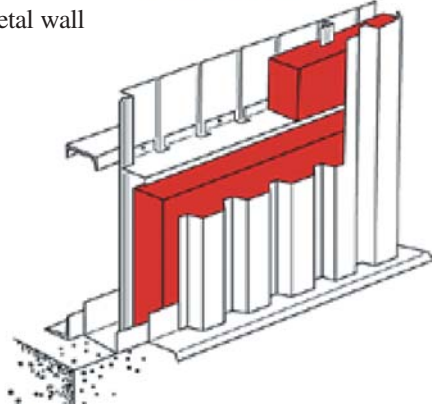
FEATURED PRODUCTS

FIBREX INSULATED FIREWALL APPLICATION

**MB Plus Steel Stud
FBX 1260 and 1280**



FibreX Insulations metal wall insulations are available in semi-rigid (MB Plus) and rigid form (FBX 1260 and 1280). These products are made from a basaltic rock-based process with a melting point in excess of 2,000°F (1,093°C) which creates mineral fibers with superior thermal, acoustical, and fire protection properties. The fibers are bonded together to form self supporting batts and boards with excellent handling and fabrication capabilities.



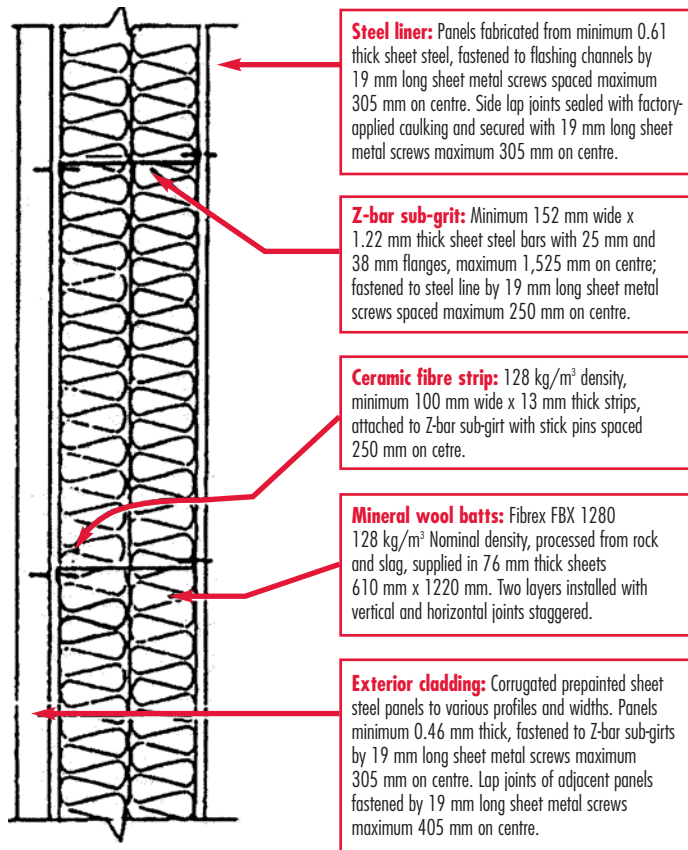
Application

Metal and steel wall assemblies

Insulated Steel Wall Assembly

Assembly Rating-1 Hour

Equivalent Opening Factor at 2h (FEO) = 0.02



POLY META FORMS-CONCRETE FORMING SYSTEM

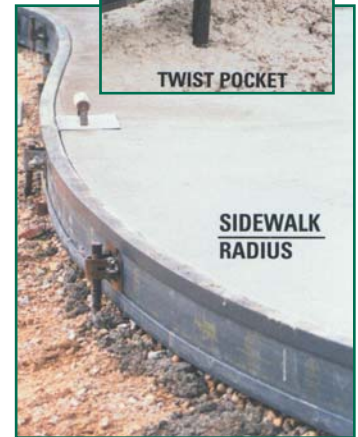


METAL FORMS CORPORATION
SINCE 1909

AN ENGINEERED SYSTEM COMBINING THE LIGHTWEIGHT ADVANTAGE OF PLASTIC WITH THE STRENGTH OF STEEL.

Brock White is now stocking the 4" and 6" flexible lightweight Plastic Forms in 12' lengths and the "Twist" and "Slide" Meta Stake Pockets. Poly Meta Forms-An Engineered System combining the lightweight advantage of plastic with the strength of steel.

- FEATHERWEIGHT – Easy to set, strip and transport
- MOISTURE RESISTANT – Forms will not rot, splinter or rust
- LOW MAINTENANCE – Easy to clean/outstanding weatherability
- DURABLE & REUSABLE – Withstands harsh construction conditions
- VERSATILE – Straight and radius forming systems designed for both flatwork and curb & gutter construction

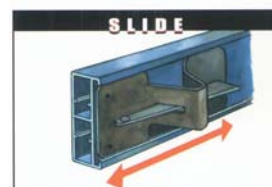


DURABLE STEEL POCKETS META STAKE POCKETS



TWIST

The "Twist" pocket provides multiple options since it can be easily inserted at any location along the length of the form. This unique pocket can be attached either before or after forms are set to grade.



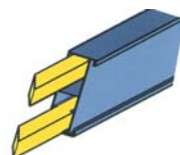
SLIDE

The "Slide" pocket is inserted at the end of either the 4" or 6" poly form. The design of this stake pocket provides:

- Longitudinal adjustment to any desired staking position
- Extra reinforcement at the joint
- Convenient connection to wood with predrilled nail holes

LIGHTWEIGHT PLASTIC FORM POLY FORM

FLEXIBLE



Poly forms without reinforcement tubes can be bent to achieve any curve down to a 3" radius.

End connection: Short polyethylene inserts provide a flexible alignment between forms.

FEATURED PRODUCT

PROPEX/SI CONCRETE SYSTEM FIBERS ARE AVAILABLE THROUGH BROCK WHITE CANADA

What Fibers Can Do For You!

We Make Good Concrete Better.

Propex/SI Concrete Systems offers a diverse portfolio of products that represents the most comprehensive solutions to concrete's shortcomings ever devised by a fiber reinforcement company.

Our product selection guide makes finding the right product for your next project easy. For a copy of the product selection guide, visit www.propexinc.com and click on concrete systems, or visit one of our Brock White locations.

Alternate for welded wire mesh

Unlike labour-intensive conventional reinforcement methods, Propex/SI Concrete Systems fibers are added directly to the concrete mix and evenly disperse throughout. The result is an advanced, multi-dimensional reinforcement system that can be placed quickly, accurately and safely.

Inhibits plastic shrinkage & settlement cracking

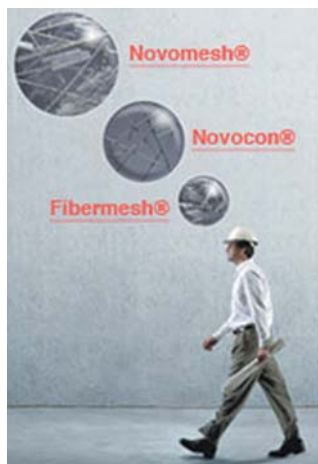
Propex/SI Concrete Systems' synthetic fibers inhibit the formation of plastic shrinkage and plastic settlement cracking by providing an internal support system for concrete. Synthetic fibers help concrete through the period when it is most vulnerable to cracking. That is, when the concrete is beginning to harden and shrink due to volume changes from loss of water. Synthetic fibers discourage plastic cracking before it starts.

Provides uniform bleeding

Bleeding is more uniform when Propex/SI Concrete Systems' fibers are used at an appropriate application rate. Isotropic contributions provided by fiber support limit the rate and scope of migration of the water from the mass to the surface. Bleed water tends to rise evenly when using Propex/SI Concrete Systems fibers and surface as a wet sheen on the concrete, rather than rushing up to the concrete surface forming ponds.

Increases shatter/impact resistance

Propex/SI Concrete Systems fiber solutions reduce the total crack void structure. This enables the concrete greater shock absorbing quality by transforming from a brittle to a more ductile material. The relatively low modulus of Propex/SI Concrete Systems microsynthetic fibers contribute to impact resistance. The addition of SI Concrete Systems fibers inhibits further crack growth by bridging the cracks that develop. The fibers also enhance the bond between the concrete and the reinforcing bars by inhibiting cracking of the concrete under bending stresses in the vicinity of the bar deformations.



 **SI® Concrete Systems**
now part of

PROPEX

Synthetic Fiber Products

Fibermesh® 150. Fibermesh, micro-reinforcement system for concrete – 100 percent virgin homopolymer polypropylene multifilament fibers with e3® patented technology.

Fibermesh® 300. Fibermesh 300 micro-reinforcement system for concrete – 100 percent virgin homopolymer polypropylene fibrillated fibers with e3® patented technology.

FiberCast™ 500 for Precast. FiberCast 500 micro-reinforcement system for concrete – 100 percent virgin homopolymer polypropylene fibers made specifically for the precast market.

ENDURO™ 600. ENDURO 600 is the latest high performance macro-synthetic fiber developed from the innovative HPP technology which was pioneered and patented by SI® Concrete Systems.

Steel Fiber Products

Novocon® 1050. Novocon 1050 steel fibers are designed specifically for the reinforcement of concrete, mortars and other cementitious mixes. Available in either hooked ends (HE) or flat ends (FE) to provide optimum anchorage within the concrete mix.

Blended Fiber Solution – Products

Novomesh® 700. Novomesh 700 fiber reinforcement system for poured-in-place concrete walls and ICF (Insulated Concrete Forms) construction—a patented blend of steel fiber and 100 percent virgin homopolymer polypropylene graded fibrillated fiber.

Novomesh® 850. Novomesh 850, secondary reinforcement system for concrete – a patented blend of cold drawn steel wire fiber and 100 percent virgin homopolymer polypropylene graded multifilament fiber.

Novomesh® 950. Novomesh 950, secondary reinforcement system for concrete – a blend of polypropylene/polyethylene high performance macro-synthetic fibers with patented sinusoidal deformations and 100% virgin polypropylene collated-fibrillated fibers.

FiberCast® 510 for Precast. FiberCast 510 secondary reinforcement system for concrete—a blend of polypropylene/polyethylene high performance macro-monofilament fibers with patented sinusoidal deformations and 100% virgin polypropylene collated-fibrillated fibers.

Applications

Residential Slabs: Proven Crack Control and Reinforcement for Residential and Light Commercial Applications.

Commercial Slabs: Advanced Solutions for Tough Commercial Applications

Industrial Slabs: The Steel Fiber With Industrial -Strength Toughness

Composite Metal Decks: A New Level of Efficiency in Placing Elevated Decks

Walls: Straight-Up Performance in Vertical Walls

Precast: The Precast Reinforcement That Enhances Profits

Shortcrete & Underground: Performance on the Fly

Transportation: Tough Enough for Roads...Or Runways



Mud Mats (Patent Pending)

Site Access Matting for Soft Soils and Sensitive Areas



Unroll this amazing new product and drive on any muddy, swampy ground without getting stuck, rutting or tracking mud off site. Mud Mats consist of pocketed, double wall, high-strength fabric with high tensile reinforcing ribs confined within each sleeve; this allows for easy deployment and amazing structural stability. Mats connect together to form custom sizes. Ground pressure from vehicle tires is reduced up to 40x causing minimal ground disturbance! Roll up when done or move to another location. Light weight, quick to deploy and washes easily. Use confidently in oil & gas construction, agriculture, golf & parks and other delicate areas where vehicle access is required.



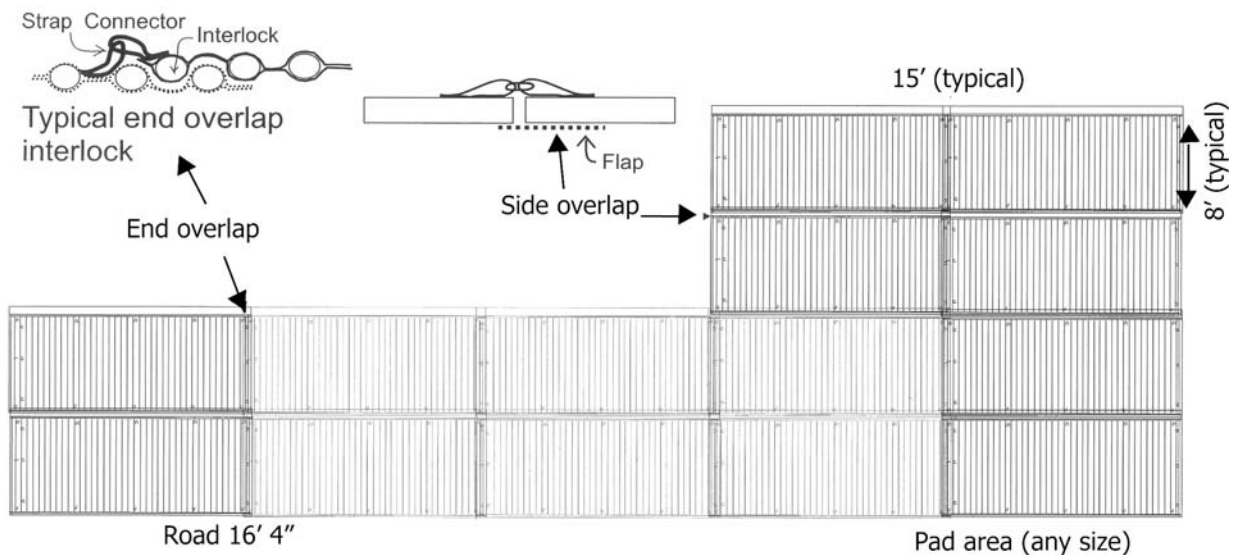
Typical Installation, Residential Application
Settlers Glen Development-Stillwater, MN



Compact Size for Shipping & Storing

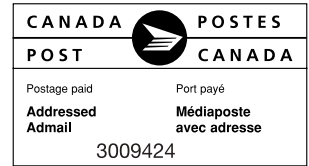


Note Strap Connectors



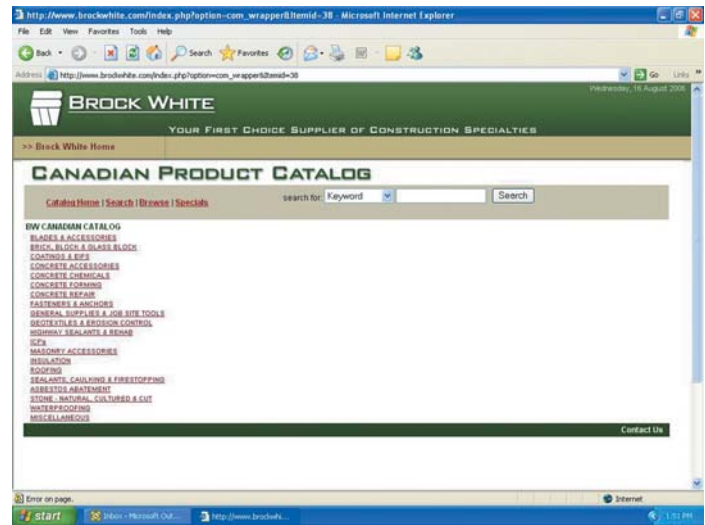
Sheppard Street, Winnipeg, Manitoba • (204) 694-3600
Sherwin Road, Winnipeg, Manitoba • (204) 772-3991
Saskatoon, Saskatchewan • (306) 931-9255
Regina, Saskatchewan • (306) 721-9333

Thunder Bay, Ontario • (807) 623-5556
Manstar-Calgary, Alberta • (403) 287-5889
AGES-Calgary, Alberta • (403) 204-3322
Manstar-Edmonton, Alberta • (780) 447-1774



Canada's eCatalog is now available on the Brock White website!

Log on today at www.brockwhite.com



David Reburn named new Regional Manager of Alberta

We are pleased to announce that David Reburn has been named Regional Manager of Alberta. David has joined Brock White this August and has been involved in construction product sales, distribution, manufacturing and marketing throughout Canada for the past 28 years. Most recently David was the Canadian Field Manager for Johns Manville and was focused in the Mechanical Insulation Industry.

David is currently President of the Thermal Insulation Association of Canada and the Edmonton Director on the Construction Specifications Canada National Board of Directors. David is excited at the opportunity and the challenge of driving the Brock White businesses in Alberta. David and his wife Shiela have three children and live in St. Albert, Alberta. Please contact him at (780) 991-3659 or email at dreburn@brockwhite.com.



David Reburn, New Alberta Regional Manager