

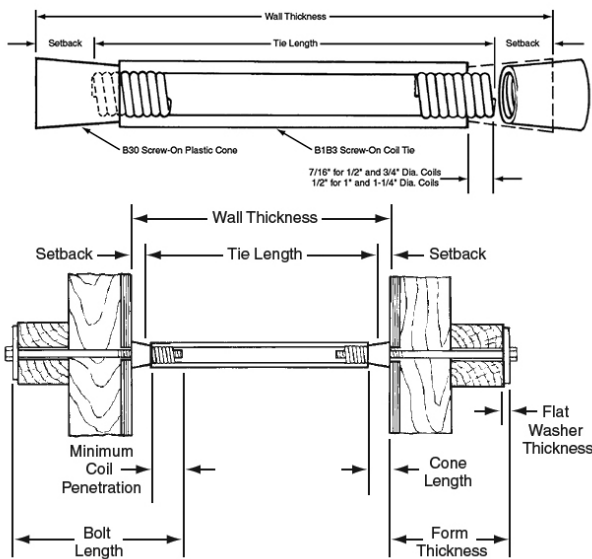
TECHNICAL DATA SHEET

DESCRIPTION

Screw-On Coil Tie is designed with longer coils that extend beyond the end of the struts.

APPLICATION

The coil ties can be used as a combination tie and form spreader.



FEATURES

- Plastic cones screw onto the projections to provide a positive setback and act as a fixed internal form spreader.
- To determine proper screw-on coil tie length, subtract the required total setback (both sides) from the wall thickness.
- Safe working load provides a factor of safety of approximately 2 to 1.

RELATED PRODUCTS

- B30 Plastic Cone
- B11 Flat Washer
- B12 Coil Rod
- B13 Coil Nut
- B14 Coil Bolt
- B39 Wing Nut

HOW TO ORDER

Specify: (1) quantity, (2) name, (3) safe working load, (4) bolt diameter, (5) tie length, (6) wall thickness, (7) setback.

Example: 1,500 pcs. B1B3 Screw-On Coil Tie, 6,750 lbs. SWL, 1/2" diameter, 22" long for a 24" wall, 1" setback.

ORDERING INFORMATION

B1/B3, 1/2" DIA. (4,500 LBS.) STANDARD 2-STRUT SCREW-ON COIL TIE

Product Code	Description	Weight
40995	4" PLAIN	0.252 LB
112180	5" PLAIN	0.336 LB
41000	6" PLAIN	0.308 LB
41006	8" PLAIN	0.350 LB
41009	9" PLAIN	0.356 LB
41012	10" PLAIN	0.384 LB
41015	11" PLAIN	0.406 LB
41018	12" PLAIN	0.428 LB
41021	13" PLAIN	0.459 LB
41024	14" PLAIN	0.500 LB
105390	15" PLAIN	0.505 LB
41030	16" PLAIN	0.525 LB
105400	17" PLAIN	0.551 LB
41036	18" PLAIN	0.570 LB
105410	19" PLAIN	0.597 LB
41042	20" PLAIN	0.630 LB
112190	21" PLAIN	0.643 LB
41048	22" PLAIN	0.660 LB
41054	24" PLAIN	0.700 LB
41060	26" PLAIN	0.758 LB
105415	27" PLAIN	0.781 LB
105420	28" PLAIN	0.804 LB
105430	30" PLAIN	0.850 LB
105440	32" PLAIN	0.896 LB
112200	34" PLAIN	0.942 LB
41090	36" PLAIN	0.960 LB
112210	38" PLAIN	1.034 LB
123666	42" PLAIN	1.100 LB
112215	44" PLAIN	1.172 LB
124502	48" PLAIN	1.264 LB

B1/B3, 1/2" DIA. (6,750 LBS.) HEAVY 2-STRUT SCREW-ON COIL TIE

Product Code	Description	Weight
123749	6" PLAIN	0.586 LB

B1/B3, 3/4" DIA. (6,750 LBS.) STANDARD 2-STRUT SCREW-ON COIL TIE

Product Code	Description	Weight
112227	6" PLAIN	0.800 LB
112225	8" PLAIN	0.880 LB
112220	12" PLAIN	1.080 LB

B1/B3, 3/4" DIA. (9,000 LBS.) HEAVY 2-STRUT SCREW-ON COIL TIE

Product Code	Description	Weight
124179	6" PLAIN	0.820 LB
124180	8" PLAIN	0.850 LB
125313	10" PLAIN	0.920 LB

TECHNICAL DATA SHEET**MANUFACTURER**

Dayton Superior Corporation
1125 Byers Road
Miamisburg, OH 45342
Customer Service: 888-977-9600
Technical Services: 877-266-7732
Website: www.daytonsuperior.com

WARRANTY (ACCESSORIES)

Limited Warranty. Dayton warrants, for a period of 60 days from the date of shipment (three years from the date of shipment in the case of formwork, excluding any consumable Products included with such formwork), that Products and any associated application drawings and engineering services provided by Dayton ("Ancillary Services") will be free from defects in material and workmanship and, in the case of custom designed formwork, that the formwork will meet the specifications set forth in the design drawings approved by Dayton and Customer. Any claim under this warranty must be made in writing within such warranty period. If any Product and/or Ancillary Service covered by a timely claim are found to be defective, Dayton will, within a reasonable time, make any necessary repairs or corrections or, at Dayton's option, replace the Product. Unless pre-authorized by Dayton in writing, Dayton will not accept any charges for correcting defects or accept the return of any Product. This warranty will not apply to any Products that have been subjected to misuse, neglect, storage damage, misapplication, accident or any other damage caused by any person other than Dayton, or that have not been maintained in accordance with Dayton's specifications. THIS LIMITED WARRANTY IS IN LIEU OF ALL OTHER WARRANTIES AS TO THE PRODUCTS AND ANCILLARY SERVICES. DAYTON MAKES NO OTHER WARRANTIES OR GUARANTEES, EXPRESS OR IMPLIED, INCLUDING ANY WARRANTY OF MERCHANTABILITY, FITNESS FOR A PARTICULAR PURPOSE OR OTHERWISE. THE REMEDIES SET FORTH IN THIS SECTION ARE CUSTOMER'S EXCLUSIVE REMEDY FOR BREACH OF WARRANTY.